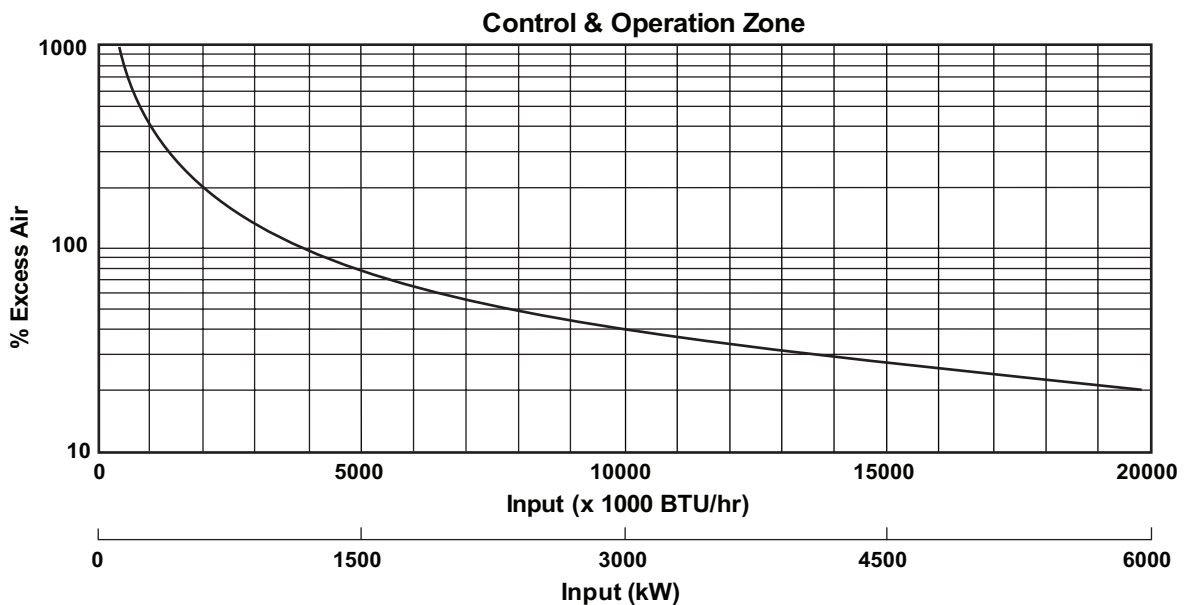


Eclipse RatioAir Burners

Model RA2000
Version 1

Parameter		Specifications
Maximum Input, BTU/hr (kW) at Neutral Chamber Conditions (Natural Gas)		20,400,000 (5970)
Minimum Input, BTU/hr (kW) <i>Lower inputs may be achieved, contact factory.</i>		350,000 (100)
Main Gas Inlet Pressure, "w.c. (mbar) <i>Fuel pressure at Ratio Regulator Inlet.</i>		30 to 60 (75 to 150)
High Fire Flame Length, Inches (mm) <i>Measured from the Outlet End of the Combustor.</i>		160 (4000)
Maximum Flame Velocity, Ft/s (m/s) <i>Approximately 15% excess air at maximum input.</i>		375 (114)
Maximum Chamber Temperature °F, °C	Alloy Tube	1750 (950)
	Block & Holder	2200 (1200)
Flame Detection		UV scanner only
Fuel		Natural Gas <i>For other fuels, contact Eclipse.</i>

- All information is based on laboratory testing in neutral (0.0" w.c.) chamber with standard combustor design. Different chamber conditions will affect the data.
- Maximum inputs are given for the standard combustion air blower without an air filter.
- All inputs based upon gross calorific values and standard conditions: 1 atmosphere, 70°F (21°C).
- Blower motor service factors greater than 1.0 may be required when firing into negative chamber pressure applications. For specific application questions, contact Eclipse.
- Eclipse reserves the right to change the construction and/or configuration of our products at any time without being obliged to adjust earlier supplies accordingly.

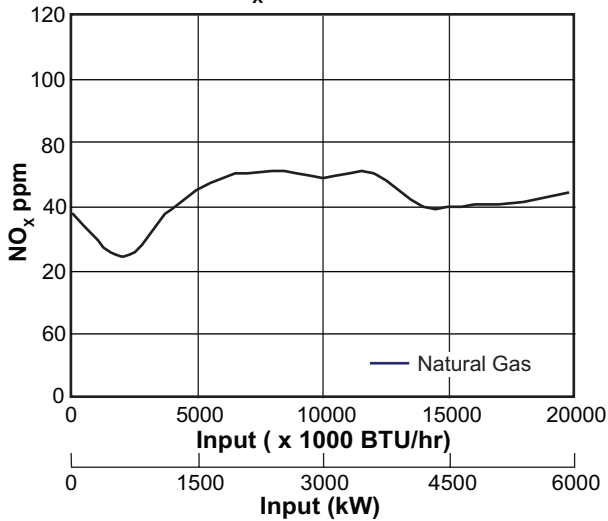


Medium Velocity Tube

Blower Model
60 Hz, 8D (20" w.c. @ 250,000 scfh, 30hp)

Specifications				
Parameter	"w.c.	mbar	60 Hz Packaged Blower	
			BTU/hr	kW
Maximum Input vs. Chamber Pressure (Natural Gas)	-2.0	-5,0	21,475,000	6288
	-1.0	-2,5	20,950,000	6134
	0.0	0,0	20,400,000	5973
	1.0	2,5	19,840,000	5809
	2.0	5,0	19,250,000	5637

NO_x Emission Data



NO_x emission data is given for:

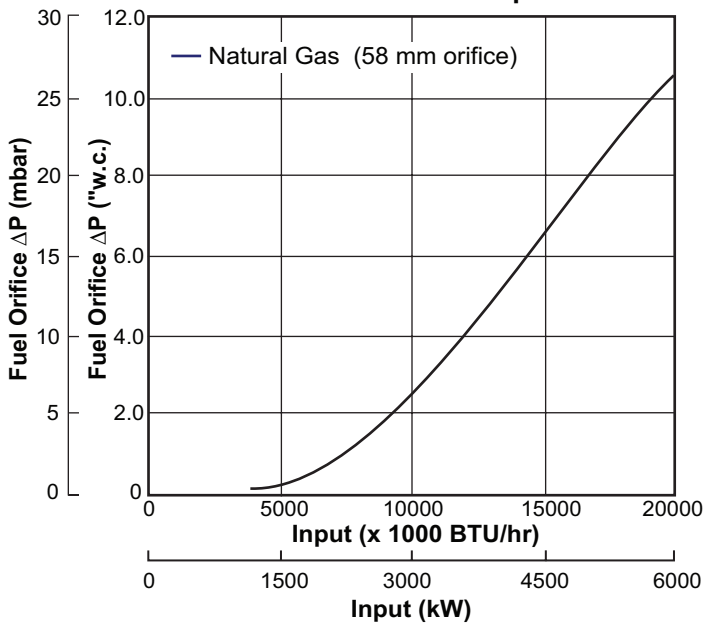
- Ambient Combustion Air ~70°F (20°C)
- Less than 1000°F (538°C) firing chamber
- Minimal Process Air Velocity
- ppm Volume Dry at 3% O₂
- Neutral Chamber Pressure

CO emission is largely influenced by chamber conditions. Contact Eclipse for an estimate of CO emissions on your application.

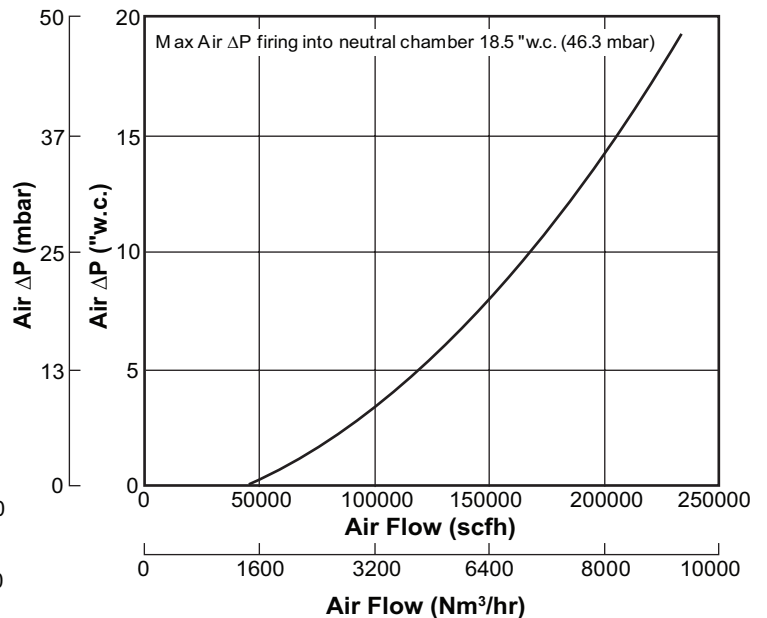
Emissions are influenced by:

- Chamber Conditions
- Fuel Type
- Firing Rate
- Ratio Regulator Adjustment
- Combustion Air Temperature

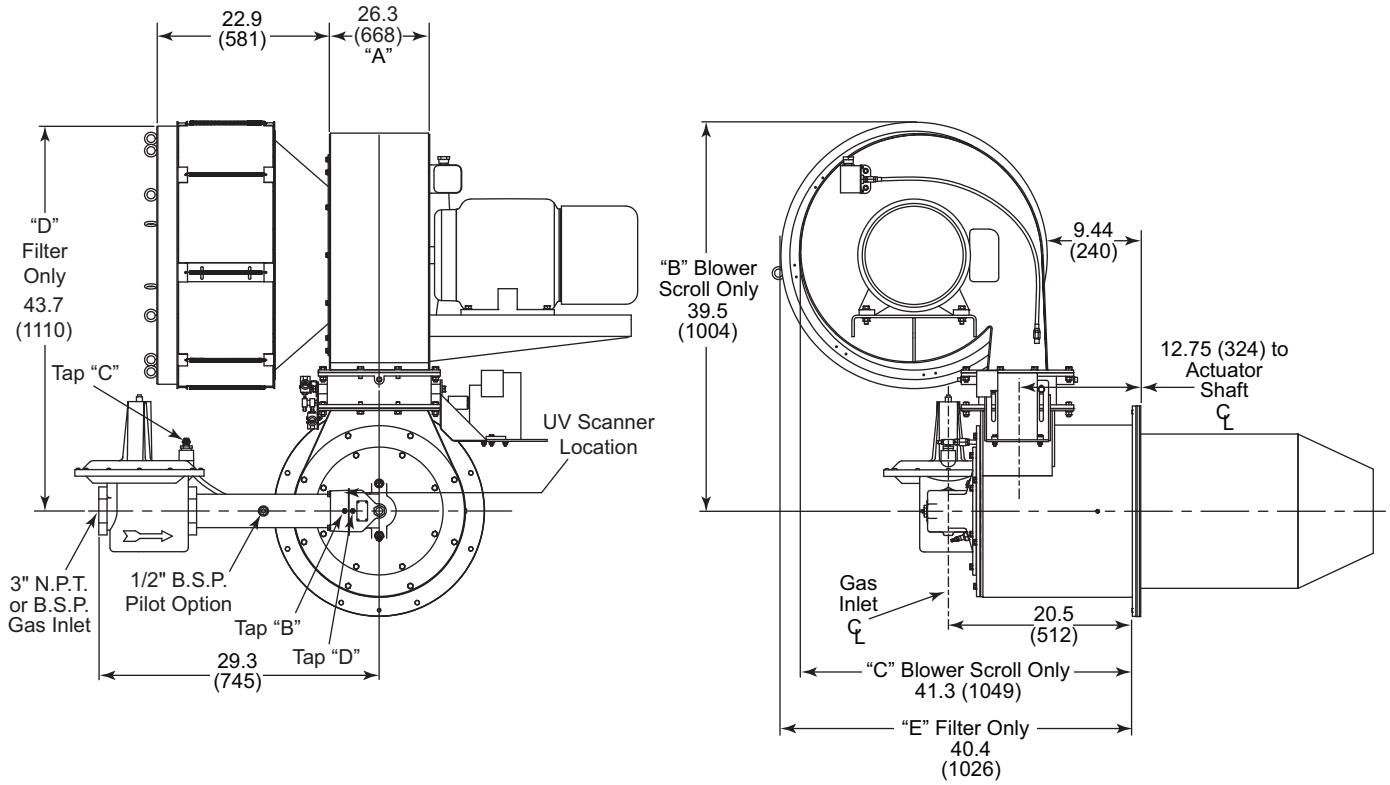
Fuel Orifice ΔP vs. Input ΔP Measured Between Taps B & D



Air ΔP vs. Air Flow (Measured Between Tap C & Chamber While Firing)

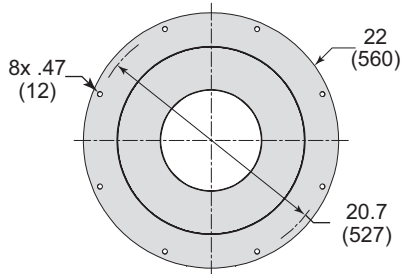
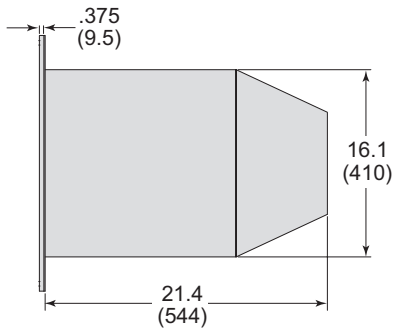


Dimensions Inches (mm)



Combustor

Exhaust Outlet Diameter: 300mm (11.8")



Alloy Tube (AISI 310)
 Max. Chamber Temp : 1,750°F (950°C)



Offered By:

Power Equipment Company
2011 Williamsburg Road
Richmond, Virginia 23231
Phone (804) 236-3800
Fax (804) 236-3882

www.peconet.com